

PLAYWAVE.EXE - Version 2.0 (s)

Copyright 1993, 1994, David J. Ryan - All rights reserved.

Release 2.0 - January 1994

Thank You for Your Support!

PLAYWAVE.EXE is a shareware program and is copyrighted material. This program is not freeware. The copying and distribution of this software is covered by a license. The terms of the license are included in this on-line help and as a separate file in the distribution disk and the compressed distribution file.

Contents of the PLAYWAVE Help File

Introduction

Features

Playing a .WAV file.

Building and editing the Play List

Program Options

Solving Problems

Shareware License

Of Interest To Programmers

Review the README Text

Environmental Impact Statement

What is Shareware?

Shareware is copyrighted software that allows limited distribution through an open license agreement. Shareware is provided to you in the hopes that the author will profit from your use. If you find the software useful and continue to use the software, it is to your benefit to register your copy. This software can be registered by mail. The registration information is available by selecting the Index of this on-line help, then clicking on How to Register.

What is FREeware?

Freeware is software that is developed and distributed without charge or license restrictions. This software is generally considered "in the public domain" once it is released without a copyright notice, patent, or restriction on distribution or use. Such software is often released when developed through government agencies, at educational institutes, or by individuals who do not desire compensation. ***This is not the case with this software. I worked my ass off to make it look good and work, so if you like and use it, register it.***

Playing a .WAV file.

To play a .WAV file you must place the filename in the play list and select it. The selection will be displayed in the top of the text box. Click on the Play button of the Control Bar to start the file playing. Once playing has started you can pause the file or stop it or advance to the next or the previous song on the play list.

You may select multiple files by holding down the shift key and pressing the down arrow, or by holding down the control key and clicking on the files you want. This is called multiple selection and this program uses the standard Windows key sequences for this feature.

NOTE: Occasionally when you select multiple files to add to the play list, the program reports the "Too Many Files" error. If you do not have a unreasonable number of files (less than 128), try selecting 5-10 files at a time and add them to your play list. Using this method I have been able to build the list to around 1000 filenames (short paths).

Building and editing the Play List

PLAYWAVE Controls

Building and editing the Play List

The program uses the common Windows dialog box for file management to help you build the play list. The play list allows you to store a number (up to 128) .WAV files per play list. You are limited only by available disk space as to the number of play lists you can have.

NOTE: Occasionally when you select multiple files the program reports the "Too Many Files" error. If you do not have a unreasonable number of files (less than 128), try selecting 5-10 files at a time and add them to your play list. Using this method I have been able to build the list to around 1000 filenames (short paths).

The play list file format is standard ANSI (utilizing the basic ASCII character set) and each file name is on a separate line. There is no fancy formatting or data base manipulation required. You can use the program to build the list or type up a list in NOTEPAD.EXE. Simply load the list and select the files to be played.

Remove a .WAV file from the play list

Playing a .WAV file.

What is a Play List?

A play list is a list of .WAV file names(including the full path) that is loaded into the PLAYWAVE.EXE program. This list tells the program what sound files you want to here and in what order.

What is NOTEPAD.EXE?

NOTEPAD.EXE is an application that is supplied with Microsoft Windows 3.1. If you cannot find NOTEPAD.EXE, try checking the Windows directory. During installation Microsoft installs NOTEPAD.EXE in the Windows directory. For further information refer to your Windows documentation.

About the Copyright

This software is copyrighted material and is the exclusive property of the author. It is protected by United States of America laws and international treaties. The use and distribution of this software is covered under a separate license agreement contained in this on-line help, the compressed distribution files, and the distribution disk.

PLAYWAVE is not a free program. It is shareware and as such you are requested to pay a small registration fee of \$12.00. This fee will register you as a user of PLAYWAVE and license you for this version of the software.

This software is offered for sale with the hope that the owner will profit. If you find the software useful and intend to continue to use it please register the software per the Registration form included in this on-line help.

[Register this Software](#)

Introduction

This program was developed so I could preview .WAV files and store the names (and paths) of the ones I liked in a file. This allowed me to go back later and listen to them. The problem was I had to print the list out, type the names to load them into the Windows-supplied SOUNDREC.EXE only to listen in the foreground.

PLAYWAVE lets you build lists, play the entire list in foreground or back ground, and does not conflict with other sound playing programs.

PLAYWAVE was built with the novice in mind. The program uses standard Windows conventions to help the user by providing a familiar interface.

Playing a .WAV file.

PLAYWAVE Controls

Of Interest to Programmers

PLAYWAVE.EXE is programmed in Visual Basic 3.0 (Professional Edition). You can modify the code with VB 3.0 Standard Edition.

BONUS: Source Code Available

That's right, Visual Basic fans! PLAYWAVE.EXE is programmed in VISUAL BASIC 3.0. To modify the source code and run the program you must have Visual Basic 3.0 or higher. This allows you to use the CMDIALOG.VBX library. The source code is available for your inclusion into your programs for \$25.00(US). Included with the source code you get a registered copy of PLAYWAVE.EXE, all the forms, declarations and code in text format. I also include the icon files for the icon animation. The code is fully commented and demonstrates .DLL calling, animation, use of the common dialog boxes and the Windows help engine.

[Order the Source Code](#)

[Register this Program](#)

How Do I order the Source Code

This program is a shareware program. Please register by sending the attached registration form and \$25 (U.S. in the form of cash, check or money order) to:

INWIXCO
ATTN: SOURCE CODE: PLAYWAVE
1713 Snowmass Drive
Plano, Texas 75025
(214) 517-9536

In return you will get the latest copy on disk (3.5" only) and

INWIXCO SHAREWARE REGISTRATION FORM

PRODUCT NAME: PLAYWAVE.EXE - Version 2.00 (S)

SOURCE CODE REQUEST

Name : _____ Date: __/__/__

Address: _____

: _____

City : _____ State: ____ Zip : _____

Phone :_(____)_____

AGE: _____ Computer Type : _____ CPU _____ RAM _____

Do you own a CD-Rom drive? ____ Yes ____ No ____ What is IT?

How did you get a copy of PLAYWAVE? _____

What Improvements are Needed? _____

How Do I Register This Program?

It is simple, select Print Topic from the above menu and print out this topic. Complete the registration form and mail it in with your registration fee.

This program is a shareware program. Please register by sending the attached registration form and \$12 (U.S. in the form of cash, check or money order) to:

INWIXCO
ATTN: REGISTRATION PLAYWAVE
1713 Snowmass Drive
Plano, Texas 75025
(214) 517-9536

In return you will get the latest copy on disk (3.5" only) and a certificate of appreciation from my wife. She thinks this computer will never pay for itself. I have already sold 40 disks and at this rate, I should have my system paid for about 17 years after I retire. Your help is appreciated.

INWIXCO SHAREWARE REGISTRATION FORM

PRODUCT NAME: PLAYWAVE.EXE - Version 2.00 (S)

Name : _____ Date: __/ __/ __

Address: _____

: _____

City : _____ State: ____ Zip : _____

Phone : _(____)_____

AGE: ____ Computer Type : _____ CPU ____ RAM ____

Do you own a CD-Rom drive? ____ Yes ____ No ____ What is IT?

How did you get a copy of PLAYWAVE? _____

What Improvements are Needed? _____

The README Text File

PLAYWAVE.EXE - version 2.00 (s)- January 1994

Copyright 1993, 1994, David J. Ryan

you can call me Dave, this is the updated version software release.

This is the obligatory Read Me File

This file is provided because I don't want you to think that this program is any less professional than the software you have been buying. It seems to be some sign of conformance to the industry accepted standard practice of not being able to manage your schedule well enough to get all the documentation in on time. I believe this is a plot by programmers to assert control at the very last minute.

This file contains the same information available in the Introduction to PLAYWAVE contained in the on-line help. Just press F1 or click on Help and select Contents to read the information contain there.

Shareware (as if you didn't know, why else would you be reading this)

This program is a shareware program. Please register by sending the attached registration form and \$12 (U.S. in the form of cash, check or money order) to:

INWIXCO

ATTN: REGISTRATION

1713 Snowmass Drive

Plano, Texas 75025

(214) 517-9536

In return you will get the latest copy on disk (3.5" only) and a certificate of appreciation from my wife. She thinks this computer will never pay for itself. I have already sold 40 disks and at this rate, I should have my system paid for about 17 years after I retire. Your help is appreciated.

BONUS: Source Code Available

That's right, Visual Basic fans! PLAYWAVE.EXE is programmed in VISUAL BASIC 3.0. To modify the source code and run the program you must have the Professional edition of Visual Basic 3.0 or higher. This allows you to use the CMDIALOG.VBX library. The source code is available for your inclusion into your programs for \$25.00(US). Included with the

source code you get a registered copy of PLAYWAVE.EXE, all the forms, declarations and code in text format. I also include the icon files for the icon animation. The code is fully commented and demonstrates .DLL calling, animation, use of the common dialog boxes and the Windows help engine.

Windows Version

This application requires Windows 3.1 or higher to run. You must have the MMSYSTEM.DLL file in your d:\windows\system directory and you must have the sound drivers for .wav files installed. If you don't have Windows 3.1, you are an idiot and deserve what you get.

Possible Problems

Known Installation Problems

Program Group Incorrectly Named PLAYWAVE.EXE

This occurs when you are running a program shell for Windows other than Program Manager. The installation program uses a DDE link to ProgMan and if it doesn't find it starts acting erratic (spastic). The program will sometime create two groups, one named "groupname" and the other named "PLAYWAVE.EXE". Simply delete the "groupname" program group and rename the "PLAYWAVE.EXE" program group "Dave's Wave Player" or something suitably flashy.

No Multimedia Support Installed

If the MMSYSTEM.DLL is not installed, you will get an error and the program will end. And you deserve it.

No Sound Driver Installed

If your system does not have the proper sound driver support you may get an error on some systems, or the program may run without sound. If this happens, run the Sound Recorder accessory that comes with Windows and try to play the .WAV file TEST.WAV that comes with PLAYWAVE. If there is no sound using the Sound Recorder then the problem is in your sound support. Refer to your Windows manual to correct the problem. Once properly installed, PLAYWAVE will play any .wav sound file. At least it did on my computer (17GB of RAM, FULL STUDIO STEREO AND ORCHESTRA PIT SOUND CARD, 4 GIGAGIGABYTES OF HARD DISK, 10 TYRANUSBYTES OF TAPE BACK UP, 64 BIT COLOR WITH PIP AND PROJECTED VGA -110 INCH RESOLUTION, AND TWO VERY LARGE HARMON-KARDON SPEAKERS CONNECTED TO A BOSE 16000 WALL EMBEDDED SYSTEM WITH SHOCK SOUND PROJECTION, AND i886 BETA PROCESSOR RUNNING AT THE SPEED OF LIGHT, a similar system is available from PCConnection for \$995, freight \$5.00 extra.)

Environmental Responsibility Statement

Wherever possible I used re-cycled code, disk, and toilet paper. There are no tropical oils used in this product. We have never used animals, live or otherwise, human or not, to test any of our products.

Solving Problems

Windows Version

This application requires Windows 3.1 or higher to run. You must have the MMSYSTEM.DLL file in your d:\windows\system directory and you must have the sound drivers for .wav files installed. If you don't have Windows 3.1, you are an idiot and deserve what you get.

Possible Problems

Known Installation Problems

Program Group Incorrectly Named PLAYWAVE.EXE

This occurs when you are running a program shell for Windows other than Program Manager. The installation program uses a DDE link to ProgMan and if it doesn't find it starts acting erratic (spastic). The program will sometime create two groups, one named "groupname" and the other named "PLAYWAVE.EXE". Simply delete the "groupname" program group and rename the "PLAYWAVE.EXE" program group "Dave's Wave Player" or something suitably flashy.

Installation Screen seems wider on one side.

So! Haven't you ever made a mistake. Don't be critical of those who are less fortunate than you.

Alright! I admit that I let this go out without checking it on every screen resolution. This only affects high resolution VGA screens (above 648 X 480). This does not affect the PLAYWAVE.EXE program, it looks great in any resolution. I promise.

No Multimedia Support Installed

If the MMSYSTEM.DLL is not installed, you will get an error and the program will end. And you deserve it.

No Sound Driver Installed

If your system does not have the proper sound driver support you may get an error on some systems, or the program may run without sound. If this happens, run the Sound

Recorder accessory that comes with Windows and try to play the .WAV file TEST.WAV that comes with PLAYWAVE. If there is no sound using the Sound Recorder then the problem is in your sound support. Refer to you Windows manual to correct the problem. Once properly installed, PLAYWAVE will play any .wav sound file. At least it did on my computer (17GB of RAM, FULL STUDIO STEREO AND ORCHESTRA PIT SOUND CARD, 4 GIGAGIGABYTES OF HARD DISK, 10 TYRANUSBYTES OF TAPE BACK UP, 64 BIT COLOR WITH PIP AND PROJECTED VGA -110 INCH RESOLUTION, AND TWO VERY LARGE HARMON-KARDON SPEAKERS CONNECTED TO A BOSE 16000 WALL EMBEDDED SYSTEM WITH SHOCK SOUND PROJECTION, AND i886 BETA PROCESSOR RUNNING AT THE SPEED OF LIGHT, a similar system is available from PCConnection for \$995, freight \$5.00 extra.)

Environmental Impact Statement

Wherever possible I used re-cycled code, disks, and toilet paper. There are no tropical oils used in this product. We have never used animals, live or otherwise, human or not, to test any of our products.

Removing a .WAV file name from the Play List

To remove a .WAV file name from the play list, simply select the file so that it appears in the top of the text box. Then click on the File menu selection and click on Remove(or press Ctrl+R) and the file will be removed from the play list. You will be prompted to save the play list when you exit.

Playing a .WAV file.

Setting the Program Options

There are three optional settings for PLAYWAVE.EXE. They are continuous play, scroll through the play list, and shuffle.

Continuous Play when checked will play the sound file displayed in the top of the text box continuously until the Stop button is clicked(or Alt+S is pressed).

Scroll though the play list selection allows the entire play list to be played. This can be interrupted by clicking on the Stop button.

Shuffle Play when checked will randomly select a .WAV file from the play list and play it, then select another, until stopped is clicked.

You must select one or the other, since both options cannot be selected at the same time.

Continuos Play Option

The continuos play option allows a sound file to be played repeatedly until stop is selected.

Scroll Through the Play List Option

To play all the sound files in the play list, select this option and click on Play.

Your License to Use

This software is copyrighted material. The material belongs to the owner, David J. Ryan, and is protected by the laws of the United States of America and international treaty. This material cannot be copied, duplicated, reproduced, or transmitted except as defined in the terms of the license agreement between the owner of the copyrighted material and the licensee.

Shareware License Agreement

Right to Use

You have a limited right to use this software for evaluation purposes only. If after 30 days, you are still using the software, or if you wish to have the latest version, please register the software.

You may make copies of this software as long as the following conditions are met;

1. You may not charge for the software or the media you supply the software on.
2. You must copy all the files included in the distribution disk or compressed distribution file. If you do not have the complete file listing or are unsure contact the owner before copying the software.
3. You cannot reverse engineer, disassemble, or convert machine language to source code equivalents for this program.
4. You may not modify any of the files in anyway.
5. You may not include the program on any of the files included in the distribution disk or compressed distribution file in any retail or commercial offering without the express written consent of the owner.

If you wish to include this software in other software that is for commercial use or retail sale, contact the owner, the address is contained in the registration screen.

[Register this Software](#)

Command Line Options

To load a file and play it immediately, start the program with `PLAYWAVE /P filename.wav`.
`PLAYWAVE` will load and play the file, then immediately exit.

To load a play list, instead of the default `AUTOLOAD.PLS`, start the program with
`PLAYWAVE /L playlist.pls`

Program Features

The program has several features that make it easy to play .WAV files. To learn about a particular feature, select the one you are interested in from the list below, or use the browse arrows(above) to page through the feature list.

[Play Lists](#)

[Drag & Drop](#)

[Play Modes](#)

[Command Line Options](#)

[Multiple File Selection](#)

[Wave File Information](#)

Play Lists

PLAYWAVE lets you build a play list by dragging and dropping from the [File Manager](#) and by multiple file selection from the File Open dialog box.

The play lists let you select a number of .wav files to play, and once selected will let you play through the list sequentially, or you can select a file for continuous play, or you select the shuffle play mode.

Play Modes

Drag and Drop

Multiple File Selection in the File Open dialog box

File Manager

File Manager is an utility that comes with Windows. To access it, simply open the Main program group by click on the icon from the Program Manager and double click on the File Manager icon (a small filing cabinet).

Multiple File Selection

To select multiple files in the File dialog box

Click the first filename you want.

Hold down the CTRL key and click each additional filename you want to select. To remove a filename from the selection, hold down CTRL and click the filename.

Note: You can also hold down the SHIFT key and click a filename to extend the selection over a block of contiguous files.

Drag and Drop Feature

PLAYWAVE lets you build a play list by dragging and dropping from the [File Manager](#) and by multiple file selection from the File Open dialog box.

To drag & drop a play list, simply clear the existing play list(or leave the existing play list in place and the files you drag and drop will be appended to the end of the play list) and highlight the .wav files you want to added from the File Manager. Then locate the cursor over one of the highlighted files, and press and hold down the left mouse button. With the mouse button down, drag the selected files over the PLAYWAVE icon and when the cursor changes to a page with a plus sign (+) in it, drop the selected files by releasing the mouse button.

NOTE: Single files can be added the same way and will play when dropped.

Play Modes

There are four modes that you can play your wave files in. The standard mode is the default, the other three modes can be selected from the menu item titles Modes.

Standard -plays a single file, once.

Continuos - plays a single file until stopped, repeating each time.

Scroll - plays all the files in the play list until stopped or the end of the list is reached

Shuffle - plays files in the play list at random until stopped

WAV File Information

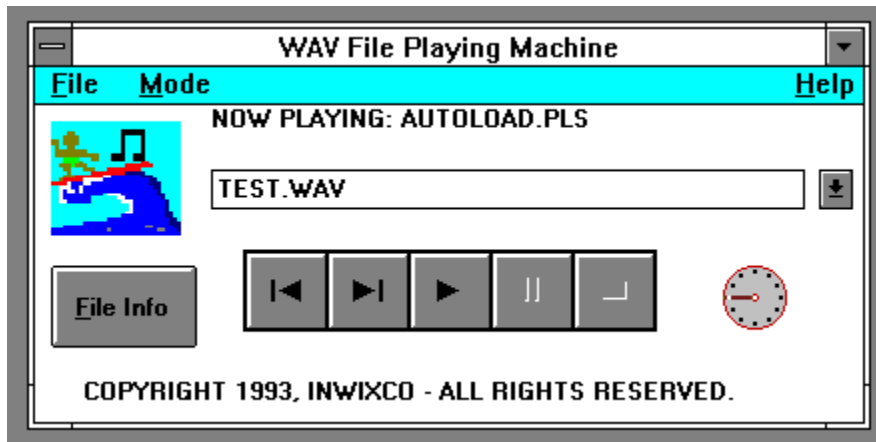
The program displays information on the file being played. The information is extracted from the file as it is loaded. The feature is not available for files played from the command line.

Thank you for your support of Playwave

I want to thank everyone for their support of PLAYWAVE. It has been a success from the start, much to my surprise! I want to thank Tim Rudy and the people at Carey Systems for giving me the inspiration to take the program to the public. Thanks again, and I hope you enjoy.

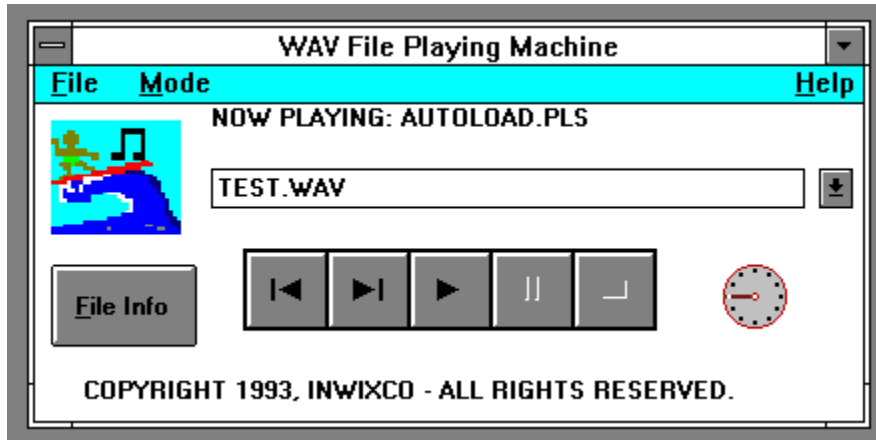
PLAYWAVE Controls

To get help on a particular control, please click on the control.



Control Bar

The control bar works very similar to a VCR or tape player. The buttons perform the same functions of Previous, Next, Play, Pause, and Stop. Click on a button to find out which one doe what.



[Return to Controls Help](#)

Previous Button

Click on this button to scroll the play list backwards.

Next Button

Click here to scroll the play list to the next file in the list.

Play Button

Click here to play the file shown in the play list box.

Pause Button

Click here to pause the file while playing.

Stop Button

Click the stop button to stop the file while playing or to stop the play mode.

File Information

[Click here to see the number of tracks and the playing time length in seconds.](#)

Indicator Gauge

This gauge indicates the percentage of the file that has played. The nine o'clock position is the starting point because I could not get the `&%^#@` custom control to start anywhere else.

Play List Box

This box is a combination box, that is you can scroll through the list or you may type a file name directly in the box. Be sure to type in the full path if the file is not in the current directory. Whatever you type will be added to your play list, which you can save when you are finished.

On Line Help

Click on Help(or press F1) for on-line help. I apologize for not providing context sensitive help, but that takes a long time to program.

Dancing Icon

This is Don Ho's brother, Yo. Yo Ho dances as the files play because he is very happy that you are going to register this program and send me some money. Then I will buy Yo some rum, remember "Yo Ho Ho and a bottle of Rum"?

Status Text

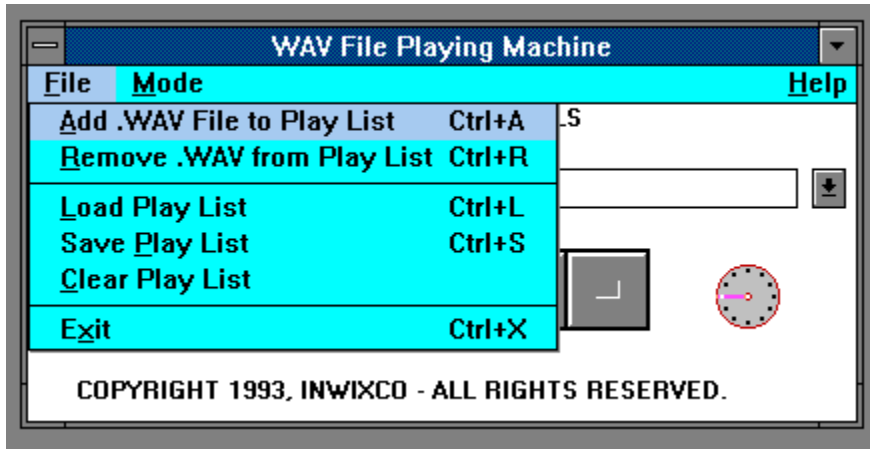
This line tells you what play mode you are in or the name of the file playing in single play mode.

Shuffle Play Mode

Select the shuffle mode to random play the files in the play list.

PLAYWAVE Menu Selections

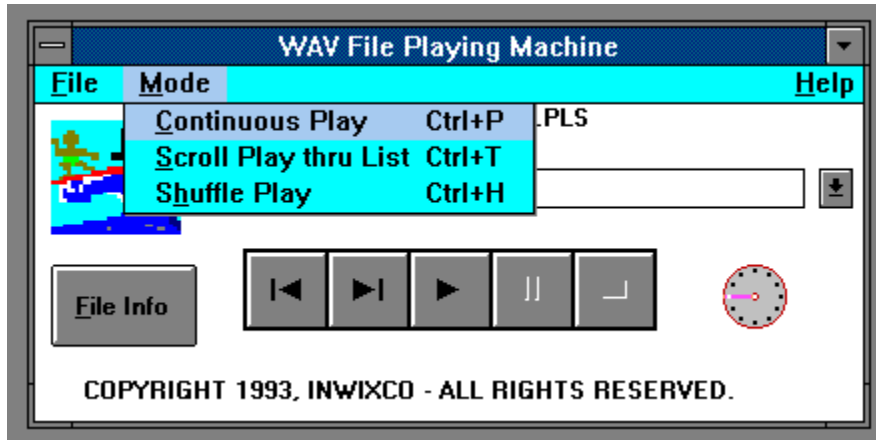
Click on the File Menu item you would like help on.



[Return to Controls Help](#)

Play Modes

Click on the play mode you would like help on.



[Return to Control Help](#)

Continuos Play

Select continuos play to play the selected file repeatedly until someone comes and slaps you in the head and forces you to stop playing that same song over and over and over and over.....

Scroll Play

Select scroll play to play the play list from the beginning of the list until the end. This is a good way to play some music in background.

Shuffle Play

Select shuffle play to play the files on the play list randomly. Clicking stop stops the play.

Add a File to the Play List

To add a file to the play list you may type the file name in the play list box or you may select this menu option and browse through your hard disk. Double-click on the file you want to add and it will be added.

When using this option you may select multiple files by holding down the shift key and pressing the down arrow, or by holding down the control key and clicking on the files you want. This is called multiple selection and this program uses the standard Windows key sequences for this feature.

Remove a File from the Play List

To remove a .WAV file name from the play list, simply select the file so that it appears in the top of the text box. Then click on the File menu selection and click on Remove (or press Ctrl+R) and the file will be removed from the play list. You will be prompted to save the play list when you exit.

Save a Play List

To save a play list, select this menu item and enter the play list filename (8 characters maximum.) The program will add the .PLS extension.

Load a Play List File

The program uses the common Windows dialog box for file management to help you build the play list. The play list allows you to store a number (up to 128) .WAV files per play list. You are limited only by available disk space as to the number of play lists you can have.

To load a play list, select this menu option and follow the dialog box instructions to load the play list. Select by double-clicking on the play list you wish to load.

Clear the Play List

Select this item to clear your play list. Be careful! There is no UNDO command for this. Use this feature when you will be drag & dropping several files into a new play list.

Exit the Program

Click here to exit the program.

